



B.TECH

ELECTRONICS ENGINEERING (VLSI DESIGN & TECHNOLOGY)

ACADEMIC SESSION 2025-26

FUTURE IN CHIP DESIGN @LTSU

B.Tech program in Electronics Engineering is offered in collaboration with L&T EduTech, leveraging the extensive expertise of the Larsen and Toubro group (L&T), an Indian multinational with a remarkable track record of executing prestigious projects across 30+ countries over 8 decades. This partnership with L&T brings real-world industry skills into the curriculum, focusing specifically on **VLSI Design and Technology**. The curriculum is thoughtfully structured in a modular format, spanning from fundamental to advanced levels, ensuring a comprehensive learning experience with hands on practice. Students enrolled in this program benefit from a multifaceted approach that encompasses technical, functional and behavioral skills, providing them with a competitive edge in their careers. The design of the program incorporates live learning from L&T industry experts, hands-on problem-solving through real-life case studies, mastery of relevant software tools, and practical learning through projects in course. Furthermore, a Capstone project is integrated to foster deep skilling, allowing students to apply their acquired knowledge in a comprehensive manner.

PROGRAM HIGHLIGHTS:

- Comprehensive industry-relevant curriculum designed by L&T EduTech with special focus on core, emerging and specialization courses.
- Hands-on learning with state-of-the-art labs and tools for VLSI circuit design, simulation, and fabrication.
- Internship opportunities at renowned semiconductor companies for invaluable industry exposure.
- Faculty comprising experienced educators and SMEs from L&T EduTech.
- World-class learning content on cutting-edge technologies for industry-specific applied skills designed by L&T EduTech.
- Industry live/real projects in 6th semester.
- Enhanced Employability through Skill exchange Platform of L&T.
- Industry Exposure makes industry ready.

Eligibility Criteria:

- **Minimum 60% marks in class XII Non-Medical or JEE / CUET.**

Course Duration:

- **4 years (3+1).**

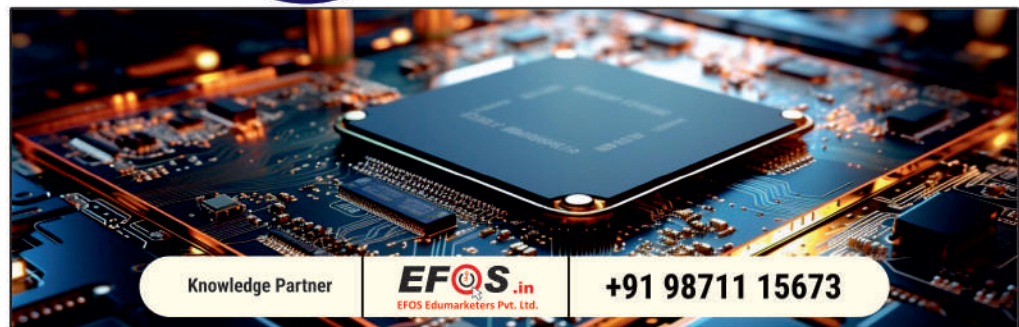
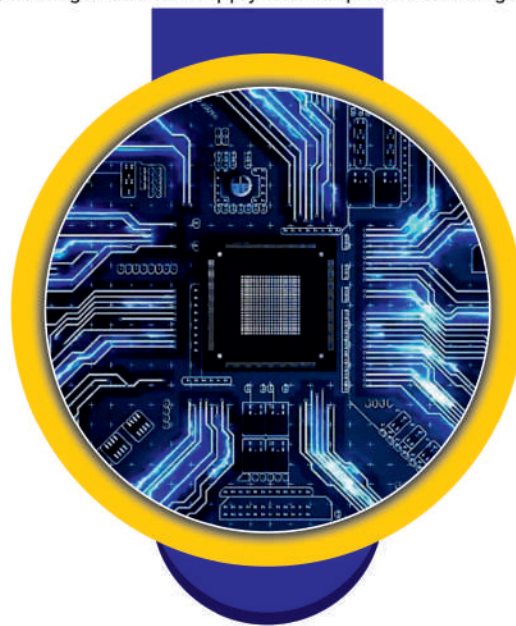
Course Structure:

- **3 Years at LTSU Campus**
- **1 year in OJD/OJT.**

Admission Process:

- **Online registration.**
- **Personal Interview.**

www.ltsu.ac.in



SCAN FOR
REGISTRATION



Knowledge Partner

EFOS.in
EFOS Edumarketers Pvt. Ltd.

+91 98711 15673

40 MINS DRIVE FROM CHANDIGARH ON CHANDIGARH-JALANDHAR NATIONAL HIGHWAY(NH 344A) NEAR ROPAR, DISTT. S.B.S NAGAR, PUNJAB 144533 (INDIA)

FOR DETAILS CALL: +91 84800-05390 | +91 95010-12152

M. 84800-05390 | 95010-12152

HYDERABAD
OFFICE

AMRUTHA CAREER GUIDANCE 23-78/1, KRISHNAVENI NAGAR, NEAR CHAITANYAPURI METRO STATION, HYDERABAD 500035 | ADMISSIONS HELPLINE +91 80706 17061